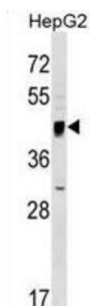


Serine Incorporator 2 (SERINC2) Antibody

Catalogue No.: abx029652



SERINC2 is a member of a family of carrier proteins, Serinc 1-5, that incorporate a polar amino acid serine into membranes and facilitate the synthesis of two serine-derived lipids, phosphatidylserine and sphingolipids. The Serinc family is a unique protein family that shows no amino acid homology to other proteins but is highly conserved among eukaryotes. The members contain 11 transmembrane domains, similar to amino acid transporters.

Target:	Serine Incorporator 2 (SERINC2)
Clonality:	Polyclonal
Reactivity:	Human
Tested Applications:	ELISA, WB
Host:	Rabbit
Recommended dilutions:	WB: 1/1000. Optimal dilutions/concentrations should be determined by the end user.
Conjugation:	Unconjugated
Immunogen:	KLH-conjugated synthetic peptide between 289-316 amino acids from the Central region of human SERINC2.
Isotype:	IgG
Form:	Liquid
Purification:	Purified through a protein A column, followed by peptide affinity purification.
Storage:	Aliquot and store at -20°C. Avoid repeated freeze/thaw cycles.
UniProt Primary AC:	Q96SA4 (UniProt , ExPASy)
Gene Symbol:	SERINC2

Datasheet

Version: 3.0.0

Revision date: 30 Jul 2025



KEGG: hsa:347735

String: [9606.ENSP00000362814](#)

Molecular Weight: Calculated MW: 50.7 kDa

Buffer: PBS containing 0.09% sodium azide.

Note: THIS PRODUCT IS FOR RESEARCH USE ONLY. NOT FOR USE IN DIAGNOSTIC, THERAPEUTIC OR COSMETIC PROCEDURES. NOT FOR HUMAN OR ANIMAL CONSUMPTION.

For Reference Only