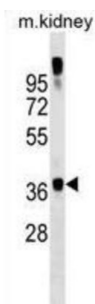


General Transcription Factor IIA, Polypeptide 1 (GTF2A1) Antibody

Catalogue No.: abx029690



Accurate transcription initiation on TATA-containing class II genes involves the ordered assembly of RNA polymerase II (POLR2A; MIM 180660) and several general initiation factors (summarized by DeJong and Roeder, 1993 [PubMed 8224848]). One of these factors is TFIIA, which when purified from HeLa extracts consists of 35-, 19-, and 12-kD subunits.

Target:	General Transcription Factor IIA, Polypeptide 1 (GTF2A1)
Clonality:	Polyclonal
Reactivity:	Human, Mouse
Tested Applications:	ELISA, WB
Host:	Rabbit
Recommended dilutions:	WB: 1/1000. Optimal dilutions/concentrations should be determined by the end user.
Conjugation:	Unconjugated
Immunogen:	KLH-conjugated synthetic peptide between 297-326 amino acids from the C-terminal region of human GTF2A1.
Isotype:	IgG
Form:	Liquid
Purification:	Purified through a protein A column, followed by peptide affinity purification.
Storage:	Aliquot and store at -20°C. Avoid repeated freeze/thaw cycles.
UniProt Primary AC:	P52655 (UniProt , ExPASy)
KEGG:	hsa:2957

Datasheet

Version: 5.0.0

Revision date: 17 Apr 2025



String: [9606.ENSF00000452454](#)

Molecular Weight: Calculated MW: 41.5 kDa

Buffer: PBS containing 0.09% sodium azide.

Specificity: Predicted to react with Rat GTF2A1.

Note: THIS PRODUCT IS FOR RESEARCH USE ONLY. NOT FOR USE IN DIAGNOSTIC, THERAPEUTIC OR COSMETIC PROCEDURES. NOT FOR HUMAN OR ANIMAL CONSUMPTION.

For Reference Only