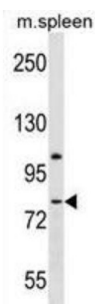


Latrophilin 3 / LPHN3 (ADGRL3) Antibody

Catalogue No.: abx029692



This gene encodes a member of the latrophilin subfamily of G-protein coupled receptors (GPCR). Latrophilins may function in both cell adhesion and signal transduction. In experiments with non-human species, endogenous proteolytic cleavage within a cysteine-rich GPS (G-protein-coupled-receptor proteolysis site) domain resulted in two subunits (a large extracellular N-terminal cell adhesion subunit and a subunit with substantial similarity to the secretin/calcitonin family of GPCRs) being non-covalently bound at the cell membrane.

Target: Latrophilin 3 / LPHN3 (ADGRL3)

Clonality: Polyclonal

Reactivity: Human, Mouse

Tested Applications: ELISA, WB

Host: Rabbit

Recommended dilutions: WB: 1/1000. Optimal dilutions/concentrations should be determined by the end user.

Conjugation: Unconjugated

Immunogen: KLH-conjugated synthetic peptide between 371-397 amino acids from the N-terminal region of human LPHN3.

Isotype: IgG

Form: Liquid

Purification: Purified through a protein A column, followed by peptide affinity purification.

Storage: Aliquot and store at -20°C. Avoid repeated freeze/thaw cycles.

UniProt Primary AC: Q9HAR2 ([UniProt](#), [ExPASy](#))

Datasheet

Version: 2.0.0

Revision date: 03 May 2025



Gene Symbol: ADGRL3

String: [9606.ENSP00000422533](#)

Molecular Weight: Calculated MW: 162 kDa

Buffer: PBS containing 0.09% sodium azide.

Specificity: Predicted to react with Rat and Cow ADGRL3.

Note: THIS PRODUCT IS FOR RESEARCH USE ONLY. NOT FOR USE IN DIAGNOSTIC, THERAPEUTIC OR COSMETIC PROCEDURES. NOT FOR HUMAN OR ANIMAL CONSUMPTION.

For Reference Only