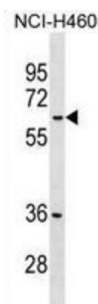


Putative Malate Dehydrogenase 1B (MDH1B) Antibody

Catalogue No.: abx029721



MDH1B has been detected at the transcript level and is part of the malate dehydrogenase superfamily.

Target:	Putative Malate Dehydrogenase 1B (MDH1B)
Clonality:	Polyclonal
Reactivity:	Human
Tested Applications:	ELISA, WB
Host:	Rabbit
Recommended dilutions:	WB: 1/1000. Optimal dilutions/concentrations should be determined by the end user.
Conjugation:	Unconjugated
Immunogen:	KLH-conjugated synthetic peptide between 304-332 amino acids from the Central region of human MDH1B.
Isotype:	IgG
Form:	Liquid
Purification:	Purified through a protein A column, followed by peptide affinity purification.
Storage:	Aliquot and store at -20°C. Avoid repeated freeze/thaw cycles.
UniProt Primary AC:	Q5I0G3 (UniProt , ExPASy)
KEGG:	hsa:130752
String:	9606.ENSP00000363533

Datasheet

Version: 3.0.0

Revision date: 13 Aug 2025



Molecular Weight: Calculated MW: 58.7 kDa

Buffer: PBS containing 0.09% sodium azide.

Note: THIS PRODUCT IS FOR RESEARCH USE ONLY. NOT FOR USE IN DIAGNOSTIC, THERAPEUTIC OR COSMETIC PROCEDURES. NOT FOR HUMAN OR ANIMAL CONSUMPTION.

For Reference Only