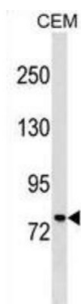


## PWWP Domain-Containing Protein MUM1 (MUM1) Antibody

Catalogue No.: abx029726



Involved in the DNA damage response pathway by contributing to the maintenance of chromatin architecture. Recruited to the vicinity of DNA breaks by TP53BP1 and plays an accessory role to facilitate damage-induced chromatin changes and promoting chromatin relaxation. Required for efficient DNA repair and cell survival following DNA damage.

**Target:** PWWP Domain-Containing Protein MUM1 (MUM1)

**Clonality:** Polyclonal

**Reactivity:** Human

**Tested Applications:** ELISA, WB

**Host:** Rabbit

**Recommended dilutions:** WB: 1/1000. Optimal dilutions/concentrations should be determined by the end user.

**Conjugation:** Unconjugated

**Immunogen:** KLH-conjugated synthetic peptide between 671-699 amino acids from the C-terminal region of human MUM1.

**Isotype:** IgG

**Form:** Liquid

**Purification:** Purified through a protein A column, followed by peptide affinity purification.

**Storage:** Aliquot and store at -20°C. Avoid repeated freeze/thaw cycles.

**UniProt Primary AC:** Q2TAK8 ([UniProt](#), [ExPASy](#))

**KEGG:** hsa:84939

# Datasheet

Version: 3.0.0

Revision date: 21 Aug 2025



**String:** [9606.ENSF00000467083](#)

**Molecular Weight:** Calculated MW: 78.6 kDa

**Buffer:** PBS containing 0.09% sodium azide.

**Note:** THIS PRODUCT IS FOR RESEARCH USE ONLY. NOT FOR USE IN DIAGNOSTIC, THERAPEUTIC OR COSMETIC PROCEDURES. NOT FOR HUMAN OR ANIMAL CONSUMPTION.

For Reference Only