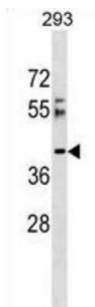


## RSRC2 Antibody

Catalogue No.: abx029737



RSRC2 (arginine/serine-rich coiled-coil 2) possibly plays a role in cell proliferation and may be a novel tumor suppressor of esophageal cancer cell growth.

**Target:** RSRC2

**Clonality:** Polyclonal

**Reactivity:** Human

**Tested Applications:** ELISA, WB

**Host:** Rabbit

**Recommended dilutions:** WB: 1/1000. Optimal dilutions/concentrations should be determined by the end user.

**Conjugation:** Unconjugated

**Immunogen:** KLH-conjugated synthetic peptide between 8-37 amino acids from the N-terminal region of human RSRC2.

**Isotype:** IgG

**Form:** Liquid

**Purification:** Purified through a protein A column, followed by peptide affinity purification.

**Storage:** Aliquot and store at -20°C. Avoid repeated freeze/thaw cycles.

**UniProt Primary AC:** Q7L4I2 ([UniProt](#), [ExPASy](#))

**Gene Symbol:** RSRC2

# Datasheet

Version: 3.0.0

Revision date: 25 Jul 2025



**KEGG:** hsa:65117

**String:** [9606.ENSP00000330188](#)

**Molecular Weight:** Calculated MW: 50.6 kDa

**Buffer:** PBS containing 0.09% sodium azide.

**Note:** THIS PRODUCT IS FOR RESEARCH USE ONLY. NOT FOR USE IN DIAGNOSTIC, THERAPEUTIC OR COSMETIC PROCEDURES. NOT FOR HUMAN OR ANIMAL CONSUMPTION.

For Reference Only