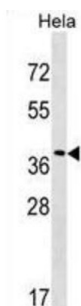


## Vacuolar Protein Sorting-Associated Protein 37C (VPS37C) Antibody

Catalogue No.: abx029739



This product is currently in development. The lead time for this product may be several months. Please contact us at [info@abbexa.com](mailto:info@abbexa.com) for an updated lead time before purchasing this product.

This product is currently in development. The lead time for this product may be several months. Please contact us at [info@abbexa.com](mailto:info@abbexa.com) for an updated lead time before purchasing this product.

VPS37C is a subunit of ESCRT-I (endosomal sorting complex required for transport I), a complex in the class E vacuolar protein sorting (VPS) pathway required for sorting ubiquitinated transmembrane proteins into internal vesicles of multivesicular bodies (Eastman et al., 2005 [PubMed 15509564]).

|                               |   |
|-------------------------------|---|
| <b>Target:</b>                | Vacuolar Protein Sorting-Associated Protein 37C (VPS37C)  |
| <b>Clonality:</b>             | Polyclonal  |
| <b>Reactivity:</b>            | Human   |
| <b>Tested Applications:</b>   | ELISA, WB   |
| <b>Host:</b>                  | Rabbit  |
| <b>Recommended dilutions:</b> | WB: 1/1000. Optimal dilutions/concentrations should be determined by the end user.                    |
| <b>Conjugation:</b>           | Unconjugated  |
| <b>Immunogen:</b>             | KLH-conjugated synthetic peptide between 142-169 amino acids from the Central region of human VPS37C. |
| <b>Isotype:</b>               | IgG   |
| <b>Form:</b>                  | Liquid  |
| <b>Purification:</b>          | Purified through a protein A column, followed by peptide affinity purification.                       |

# Datasheet

Version: 4.0.0

Revision date: 28 Aug 2025



**Storage:** Aliquot and store at -20°C. Avoid repeated freeze/thaw cycles.

**UniProt Primary AC:** A5D8V6 ([UniProt](#), [ExPASy](#))

**Gene Symbol:** VPS37C

**KEGG:** hsa:55048

**String:** [9606.ENSP00000301765](#)

**Molecular Weight:** Calculated MW: 38.7 kDa

**Buffer:** PBS containing 0.09% sodium azide.

**Note:** THIS PRODUCT IS FOR RESEARCH USE ONLY. NOT FOR USE IN DIAGNOSTIC, THERAPEUTIC OR COSMETIC PROCEDURES. NOT FOR HUMAN OR ANIMAL CONSUMPTION.

For Reference Only