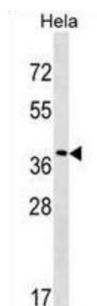


Vacuolar Protein Sorting-Associated Protein 37C (VPS37C) Antibody

Catalogue No.: abx029739



This product is currently in development. The lead time for this product may be several months. Please contact us at info@abbexa.com for an updated lead time before purchasing this product.

This product is currently in development. The lead time for this product may be several months. Please contact us at info@abbexa.com for an updated lead time before purchasing this product.

VPS37C is a subunit of ESCRT-I (endosomal sorting complex required for transport I), a complex in the class E vacuolar protein sorting (VPS) pathway required for sorting ubiquitinated transmembrane proteins into internal vesicles of multivesicular bodies (Eastman et al., 2005 [PubMed 15509564]).

Target:	Vacuolar Protein Sorting-Associated Protein 37C (VPS37C)
Clonality:	Polyclonal
Reactivity:	Human
Tested Applications:	ELISA, WB
Host:	Rabbit
Recommended dilutions:	WB: 1/1000. Optimal dilutions/concentrations should be determined by the end user.
Conjugation:	Unconjugated
Immunogen:	KLH-conjugated synthetic peptide between 142-169 amino acids from the Central region of human VPS37C.
Isotype:	IgG
Form:	Liquid
Purification:	Purified through a protein A column, followed by peptide affinity purification.

Datasheet

Version: 4.0.0

Revision date: 03 May 2025



Storage: Aliquot and store at -20°C. Avoid repeated freeze/thaw cycles.

UniProt Primary AC: A5D8V6 ([UniProt](#), [ExPASy](#))

Gene Symbol: VPS37C

KEGG: hsa:55048

String: [9606.ENSP00000301765](#)

Molecular Weight: Calculated MW: 38.7 kDa

Buffer: PBS containing 0.09% sodium azide.

Note: THIS PRODUCT IS FOR RESEARCH USE ONLY. NOT FOR USE IN DIAGNOSTIC, THERAPEUTIC OR COSMETIC PROCEDURES. NOT FOR HUMAN OR ANIMAL CONSUMPTION.

For Reference Only