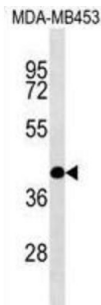


## Src Homology 2 Domain Containing F (SHF) Antibody

Catalogue No.: abx029750



Adapter protein which may play a role in the regulation of apoptosis in response to PDGF.

**Target:** Src Homology 2 Domain Containing F (SHF)

**Clonality:** Polyclonal

**Reactivity:** Human

**Tested Applications:** ELISA, WB

**Host:** Rabbit

**Recommended dilutions:** WB: 1/1000. Optimal dilutions/concentrations should be determined by the end user.

**Conjugation:** Unconjugated

**Immunogen:** KLH-conjugated synthetic peptide between 384-411 amino acids from the C-terminal region of human SHF.

**Isotype:** IgG

**Form:** Liquid

**Purification:** Purified through a protein A column, followed by peptide affinity purification.

**Storage:** Aliquot and store at -20°C. Avoid repeated freeze/thaw cycles.

**UniProt Primary AC:** Q7M4L6 ([UniProt](#), [ExPASy](#))

**Gene Symbol:** SHF

**String:** [9606.ENSP00000290894](#)

# Datasheet

Version: 3.0.0

Revision date: 12 Sep 2025



**Molecular Weight:** Calculated MW: 46.8 kDa

**Buffer:** PBS containing 0.09% sodium azide.

**Specificity:** Predicted to react with Mouse SHF.

**Note:** THIS PRODUCT IS FOR RESEARCH USE ONLY. NOT FOR USE IN DIAGNOSTIC, THERAPEUTIC OR COSMETIC PROCEDURES. NOT FOR HUMAN OR ANIMAL CONSUMPTION.

For Reference Only