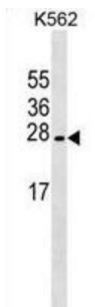


Protein LZIC (LZIC) Antibody

Catalogue No.: abx029758



LZIC belongs to the CTNNBIP1 family. It is ubiquitously expressed with highest levels in kidney. LZIC is up-regulated in several cases of gastric cancers.

Target:	Protein LZIC (LZIC)
Clonality:	Polyclonal
Reactivity:	Human, Rat
Tested Applications:	ELISA, WB, IHC, IF/ICC, FCM
Host:	Rabbit
Recommended dilutions:	WB: 1/2000, IHC-P: 1/500, IF/ICC: 1/25, FCM: 1/25. Not tested in IHC-F. Optimal dilutions/concentrations should be determined by the end user.
Conjugation:	Unconjugated
Immunogen:	KLH-conjugated synthetic peptide between 81-109 amino acids from the Central region of human LZIC.
Isotype:	IgG
Form:	Liquid
Purification:	Purified through a protein A column, followed by peptide affinity purification.
Storage:	Aliquot and store at -20°C. Avoid repeated freeze/thaw cycles.
UniProt Primary AC:	Q8WZA0 (UniProt , ExPASy)
Gene Symbol:	LZIC

Datasheet

Version: 3.0.0

Revision date: 19 Aug 2025



KEGG: hsa:84328

String: [9606.ENSP00000366430](#)

Molecular Weight: Calculated MW: 21.5 kDa

Buffer: PBS containing 0.09% sodium azide.

Specificity: Predicted to react with Mouse and Zebrafish LZIC.

Note: THIS PRODUCT IS FOR RESEARCH USE ONLY. NOT FOR USE IN DIAGNOSTIC, THERAPEUTIC OR COSMETIC PROCEDURES. NOT FOR HUMAN OR ANIMAL CONSUMPTION.

For Reference Only