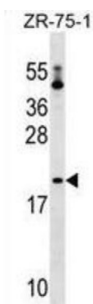


Probable Peptidyl-tRNA Hydrolase (PTRH1) Antibody

Catalogue No.: abx029767



C9orf115 belongs to the Peptidyl-tRNA hydrolase (PTH) family. Peptidyl-tRNA hydrolase (PTH) is a monomeric protein that cleaves the ester bond linking the nascent peptide and tRNA when peptidyl-tRNA is released prematurely from the ribosome. This ensures the recycling of peptidyl-tRNAs into tRNAs produced through abortion of translation and is essential for cell viability.

Target:	Probable Peptidyl-tRNA Hydrolase (PTRH1)
Clonality:	Polyclonal
Reactivity:	Human
Tested Applications:	ELISA, WB
Host:	Rabbit
Recommended dilutions:	WB: 1/1000. Optimal dilutions/concentrations should be determined by the end user.
Conjugation:	Unconjugated
Immunogen:	KLH-conjugated synthetic peptide between 102-129 amino acids from the Central region of human PTRH1.
Isotype:	IgG
Form:	Liquid
Purification:	Purified through a protein A column, followed by peptide affinity purification.
Storage:	Aliquot and store at -20°C. Avoid repeated freeze/thaw cycles.
UniProt Primary AC:	Q86Y79 (UniProt , ExPASy)
Gene Symbol:	PTRH1

Datasheet

Version: 3.0.0

Revision date: 04 Aug 2025



KEGG: hsa:138428

String: [9606.ENSP00000418661](#)

Molecular Weight: Calculated MW: 22.9 kDa

Buffer: PBS containing 0.09% sodium azide.

Note: THIS PRODUCT IS FOR RESEARCH USE ONLY. NOT FOR USE IN DIAGNOSTIC, THERAPEUTIC OR COSMETIC PROCEDURES. NOT FOR HUMAN OR ANIMAL CONSUMPTION.

For Reference Only