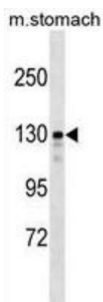


SLIT-ROBO Rho GTPase Activating Protein 1 (SRGAP1) Antibody

Catalogue No.: abx029784



GTPase-activating protein for RhoA and Cdc42 small GTPases. Together with CDC42 seems to be involved in the pathway mediating the repulsive signaling of Robo and Slit proteins in neuronal migration. SLIT2, probably through interaction with ROBO1, increases the interaction of SRGAP1 with ROBO1 and inactivates CDC42.

Target:	SLIT-ROBO Rho GTPase Activating Protein 1 (SRGAP1)
Clonality:	Polyclonal
Reactivity:	Human, Mouse
Tested Applications:	ELISA, WB
Host:	Rabbit
Recommended dilutions:	WB: 1/1000. Optimal dilutions/concentrations should be determined by the end user.
Conjugation:	Unconjugated
Immunogen:	KLH-conjugated synthetic peptide between 469-497 amino acids from the Central region of human SRGAP1.
Isotype:	IgG
Form:	Liquid
Purification:	Purified through a protein A column, followed by peptide affinity purification.
Storage:	Aliquot and store at -20°C. Avoid repeated freeze/thaw cycles.
UniProt Primary AC:	Q7Z6B7 (UniProt , ExPASy)
Gene Symbol:	SRGAP1

Datasheet

Version: 4.0.0

Revision date: 24 Aug 2025



KEGG: hsa:57522

String: [9606.ENSP00000347198](#)

Molecular Weight: Calculated MW: 124 kDa

Buffer: PBS containing 0.09% sodium azide.

Note: THIS PRODUCT IS FOR RESEARCH USE ONLY. NOT FOR USE IN DIAGNOSTIC, THERAPEUTIC OR COSMETIC PROCEDURES. NOT FOR HUMAN OR ANIMAL CONSUMPTION.

For Reference Only