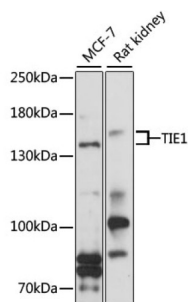


Tyrosine-Protein Kinase Receptor Tie-1 (TIE1) Antibody

Catalogue No.: abx002379



Western blot analysis of extracts of various cell lines using TIE1 Antibody (1/1000 dilution).

TIE1 Antibody is a Rabbit Polyclonal antibody against TIE1. This gene encodes a member of the tyrosine protein kinase family. The encoded protein plays a critical role in angiogenesis and blood vessel stability by inhibiting angiopoietin 1 signaling through the endothelial receptor tyrosine kinase Tie2. Ectodomain cleavage of the encoded protein relieves inhibition of Tie2 and is mediated by multiple factors including vascular endothelial growth factor. Alternatively spliced transcript variants encoding multiple isoforms have been observed for this gene.

Target:	Tyrosine-Protein Kinase Receptor Tie-1 (TIE1)
Clonality:	Polyclonal
Reactivity:	Human, Rat
Tested Applications:	WB
Host:	Rabbit
Recommended dilutions:	WB: 1/200 - 1/2000. Optimal dilutions/concentrations should be determined by the end user.
Conjugation:	Unconjugated
Immunogen:	Recombinant fusion protein corresponding to human TIE1
Isotype:	IgG
Form:	Liquid
Purification:	Purified by affinity chromatography.
Storage:	Aliquot and store at -20°C. Avoid repeated freeze/thaw cycles.
UniProt Primary AC:	P35590 (UniProt , ExPASy)

Datasheet

Version: 3.0.0

Revision date: 25 Jun 2025



GeneID: [7075](#)

NCBI Accession: NP_005415.1

KEGG: hsa:7075

String: [9606.ENSP00000361554](#)

Molecular Weight: Calculated MW: 34 kDa/40 kDa/125 kDa
Observed MW: 135/140 kDa

Buffer: PBS, pH 7.3, containing 0.01% thiomersal, 50% glycerol.

Concentration: 1 mg/ml

Note: THIS PRODUCT IS FOR RESEARCH USE ONLY. NOT FOR USE IN DIAGNOSTIC, THERAPEUTIC OR COSMETIC PROCEDURES. NOT FOR HUMAN OR ANIMAL CONSUMPTION.

For Reference Only