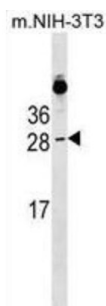


RAB39B, Member RAS Oncogene Family (RAB39B) Antibody

Catalogue No.: abx029788



This gene encodes a member of the Rab family of proteins. Rab proteins are small GTPases that are involved in vesicular trafficking.

Target:	RAB39B, Member RAS Oncogene Family (RAB39B)
Clonality:	Polyclonal
Reactivity:	Human, Mouse
Tested Applications:	ELISA, WB
Host:	Rabbit
Recommended dilutions:	WB: 1/1000. Optimal dilutions/concentrations should be determined by the end user.
Conjugation:	Unconjugated
Immunogen:	KLH-conjugated synthetic peptide between 12-40 amino acids from the N-terminal region of human RAB39B.
Isotype:	IgG
Form:	Liquid
Purification:	Purified through a protein A column, followed by peptide affinity purification.
Storage:	Aliquot and store at -20°C. Avoid repeated freeze/thaw cycles.
UniProt Primary AC:	Q96DA2 (UniProt , ExPASy)
KEGG:	hsa:116442

Datasheet

Version: 2.0.0

Revision date: 05 Aug 2025



String: [9606.ENSF00000358466](#)

Molecular Weight: Calculated MW: 24.6 kDa

Buffer: PBS containing 0.09% sodium azide.

Specificity: Predicted to react with Cow RAB39B.

Note: THIS PRODUCT IS FOR RESEARCH USE ONLY. NOT FOR USE IN DIAGNOSTIC, THERAPEUTIC OR COSMETIC PROCEDURES. NOT FOR HUMAN OR ANIMAL CONSUMPTION.

For Reference Only