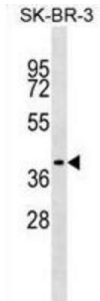


# Translocating Chain-Associated Membrane Protein 1 (TRAM1) Antibody

Catalogue No.: abx029797



This gene encodes a multi-pass membrane protein that is part of the mammalian endoplasmic reticulum. The encoded protein influences glycosylation and facilitates the translocation of secretory proteins across the endoplasmic reticulum membrane by regulating which domains of the nascent polypeptide chain are visible to the cytosol during a translocational pause. [provided by RefSeq].

<b>Target:</b>	Translocating Chain-Associated Membrane Protein 1 (TRAM1)
<b>Clonality:</b>	Polyclonal
<b>Reactivity:</b>	Human
<b>Tested Applications:</b>	ELISA, WB
<b>Host:</b>	Rabbit
<b>Recommended dilutions:</b>	WB: 1/1000. Optimal dilutions/concentrations should be determined by the end user.
<b>Conjugation:</b>	Unconjugated
<b>Immunogen:</b>	KLH-conjugated synthetic peptide between 346-372 amino acids from the C-terminal region of human TRAM1.
<b>Isotype:</b>	IgG
<b>Form:</b>	Liquid
<b>Purification:</b>	Purified through a protein A column, followed by peptide affinity purification.
<b>Storage:</b>	Aliquot and store at -20°C. Avoid repeated freeze/thaw cycles.
<b>UniProt Primary AC:</b>	Q15629 ( <a href="#">UniProt</a> , <a href="#">ExPASy</a> )

# Datasheet

Version: 3.0.0

Revision date: 16 Sep 2025



**KEGG:** hsa:23471

**String:** [9606.ENSP00000262213](#)

**Molecular Weight:** Calculated MW: 43.1 kDa

**Buffer:** PBS containing 0.09% sodium azide.

**Note:** THIS PRODUCT IS FOR RESEARCH USE ONLY. NOT FOR USE IN DIAGNOSTIC, THERAPEUTIC OR COSMETIC PROCEDURES. NOT FOR HUMAN OR ANIMAL CONSUMPTION.

For Reference Only