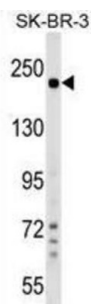


Shroom Family Member 2 (SHROOM2) Antibody

Catalogue No.: abx029808



The protein encoded by this gene shares significant similarities with the apical protein from *Xenopus laevis* which is implicated in amiloride-sensitive sodium channel activity. This gene is a strong candidate gene for ocular albinism type 1 syndrome.

Target:	Shroom Family Member 2 (SHROOM2)
Clonality:	Polyclonal
Reactivity:	Human
Tested Applications:	ELISA, WB
Host:	Rabbit
Recommended dilutions:	WB: 1/1000. Optimal dilutions/concentrations should be determined by the end user.
Conjugation:	Unconjugated
Immunogen:	KLH-conjugated synthetic peptide between 599-625 amino acids from the Central region of human SHROOM2.
Isotype:	IgG
Form:	Liquid
Purification:	Purified through a protein A column, followed by peptide affinity purification.
Storage:	Aliquot and store at -20°C. Avoid repeated freeze/thaw cycles.
UniProt Primary AC:	Q13796 (UniProt , ExPASy)
KEGG:	hsa:357

Datasheet

Version: 4.0.0

Revision date: 13 Aug 2025



String: [9606.ENSF00000370299](#)

Molecular Weight: Calculated MW: 176 kDa

Buffer: PBS containing 0.09% sodium azide.

Note: THIS PRODUCT IS FOR RESEARCH USE ONLY. NOT FOR USE IN DIAGNOSTIC, THERAPEUTIC OR COSMETIC PROCEDURES. NOT FOR HUMAN OR ANIMAL CONSUMPTION.

For Reference Only