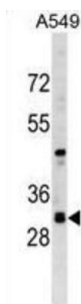


Ras Association Domain Family Member 3 (RASSF3) Antibody

Catalogue No.: abx029819



The RAS oncogene (MIM 190020) is mutated in nearly one-third of all human cancers. Members of the RAS superfamily are plasma membrane GTP-binding proteins that modulate intracellular signal transduction pathways. A subfamily of RAS effectors, including RASSF3, share a RAS association (RA) domain.[supplied by OMIM].

| | |
|-------------------------------|--|
| Target: | Ras Association Domain Family Member 3 (RASSF3) |
| Clonality: | Polyclonal |
| Reactivity: | Human |
| Tested Applications: | ELISA, WB |
| Host: | Rabbit |
| Recommended dilutions: | WB: 1/1000. Optimal dilutions/concentrations should be determined by the end user. |
| Conjugation: | Unconjugated |
| Immunogen: | KLH-conjugated synthetic peptide between 10-36 amino acids from the N-terminal region of human RASSF3. |
| Isotype: | IgG |
| Form: | Liquid |
| Purification: | Purified through a protein A column, followed by peptide affinity purification. |
| Storage: | Aliquot and store at -20°C. Avoid repeated freeze/thaw cycles. |
| UniProt Primary AC: | Q86WH2 (UniProt , ExPASy) |
| Gene Symbol: | RASSF3 |

Datasheet

Version: 3.0.0

Revision date: 02 Sep 2025



KEGG: hsa:283349

String: [9606.ENSP00000443021](#)

Molecular Weight: Calculated MW: 27.6 kDa

Buffer: PBS containing 0.09% sodium azide.

Note: THIS PRODUCT IS FOR RESEARCH USE ONLY. NOT FOR USE IN DIAGNOSTIC, THERAPEUTIC OR COSMETIC PROCEDURES. NOT FOR HUMAN OR ANIMAL CONSUMPTION.

For Reference Only