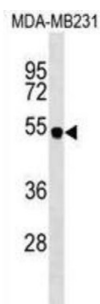


Protein Spinster Homolog 2 (SPNS2) Antibody

Catalogue No.: abx029824



Sphingolipid transporter required for migration of myocardial precursors. Transports sphingosine 1-phosphate (S1P), a secreted lipid mediator that plays critical roles in cardiovascular, immunological, and neural development and function. Mediates the export of S1P from cells in the extraembryonic yolk syncytial layer (YSL), thereby regulating myocardial precursor migration.

Target:	Protein Spinster Homolog 2 (SPNS2)
Clonality:	Polyclonal
Reactivity:	Human
Tested Applications:	ELISA, WB, IHC, FCM
Host:	Rabbit
Recommended dilutions:	WB: 1/1000, IHC-P: 1/100, FCM: 1/25. Not tested in IHC-F. Optimal dilutions/concentrations should be determined by the end user.
Conjugation:	Unconjugated
Immunogen:	KLH-conjugated synthetic peptide between 68-94 amino acids from the N-terminal region of human SPNS2.
Isotype:	IgG
Form:	Liquid
Purification:	Purified through a protein A column, followed by peptide affinity purification.
Storage:	Aliquot and store at -20°C. Avoid repeated freeze/thaw cycles.
UniProt Primary AC:	Q8IVW8 (UniProt , ExPASy)
Gene Symbol:	SPNS2

Datasheet

Version: 3.0.0

Revision date: 04 Mar 2025



KEGG: hsa:124976

String: [9606.ENSP00000333292](#)

Molecular Weight: Calculated MW: 58 kDa

Buffer: PBS containing 0.09% sodium azide.

Note: THIS PRODUCT IS FOR RESEARCH USE ONLY. NOT FOR USE IN DIAGNOSTIC, THERAPEUTIC OR COSMETIC PROCEDURES. NOT FOR HUMAN OR ANIMAL CONSUMPTION.

For Reference Only