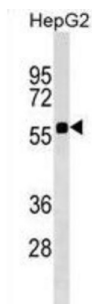


Scavenger Receptor Cysteine-Rich Domain-Containing Group B Protein (SRCRB4D) Antibody

Catalogue No.: abx029825



The scavenger receptor cysteine-rich (SRCR) superfamily is an ancient and highly conserved group of cell surface and/or secreted proteins, some of which are involved in the development of the immune system and the regulation of both innate and adaptive immune responses. Group B SRCR domains usually contain 8 regularly spaced cysteines that give rise to a well-defined intradomain disulfide-bond pattern.

Target:	Scavenger Receptor Cysteine-Rich Domain-Containing Group B Protein (SRCRB4D)
Clonality:	Polyclonal
Reactivity:	Human
Tested Applications:	ELISA, WB
Host:	Rabbit
Recommended dilutions:	WB: 1/1000. Optimal dilutions/concentrations should be determined by the end user.
Conjugation:	Unconjugated
Immunogen:	KLH-conjugated synthetic peptide between 165-191 amino acids from the Central region of human SRCRB4D.
Isotype:	IgG
Form:	Liquid
Purification:	Purified through a protein A column, followed by peptide affinity purification.
Storage:	Aliquot and store at -20°C. Avoid repeated freeze/thaw cycles.
UniProt Primary AC:	Q8WTU2 (UniProt , ExPASy)

Datasheet

Version: 3.0.0

Revision date: 18 Mar 2025



Gene Symbol: SSC4D

KEGG: hsa:136853

String: [9606.ENSP00000275560](#)

Molecular Weight: Calculated MW: 60.8 kDa

Buffer: PBS containing 0.09% sodium azide.

Note: THIS PRODUCT IS FOR RESEARCH USE ONLY. NOT FOR USE IN DIAGNOSTIC, THERAPEUTIC OR COSMETIC PROCEDURES. NOT FOR HUMAN OR ANIMAL CONSUMPTION.

For Reference Only