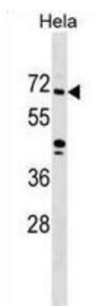


Zinc Finger Protein 280B (ZNF280B) Antibody

Catalogue No.: abx029833



This gene was identified by homology to other species. Its encoded protein is approximately 78-88% identical to a predicted sheep protein of unknown function. The protein is also approximately 25% identical to the Drosophila protein suppressor of hairy wing, which is a leucine zipper protein that represses the function of transcriptional enhancers of the gypsy retrotransposon.

Target: Zinc Finger Protein 280B (ZNF280B)

Clonality: Polyclonal

Reactivity: Human

Tested Applications: ELISA, WB

Host: Rabbit

Recommended dilutions: WB: 1/1000. Optimal dilutions/concentrations should be determined by the end user.

Conjugation: Unconjugated

Immunogen: KLH-conjugated synthetic peptide between 60-89 amino acids from the N-terminal region of human ZNF280B.

Isotype: IgG

Form: Liquid

Purification: Purified through a protein A column, followed by peptide affinity purification.

Storage: Aliquot and store at -20°C. Avoid repeated freeze/thaw cycles.

UniProt Primary AC: Q86YH2 ([UniProt](#), [ExPASy](#))

Gene Symbol: ZNF280B

Datasheet

Version: 4.0.0

Revision date: 22 Aug 2025



KEGG: hsa:140883

String: [9606.ENSP00000480958](#)

Molecular Weight: Calculated MW: 61.6 kDa

Buffer: PBS containing 0.09% sodium azide.

Note: THIS PRODUCT IS FOR RESEARCH USE ONLY. NOT FOR USE IN DIAGNOSTIC, THERAPEUTIC OR COSMETIC PROCEDURES. NOT FOR HUMAN OR ANIMAL CONSUMPTION.

For Reference Only