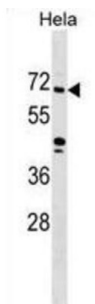


## Zinc Finger Protein 280B (ZNF280B) Antibody

Catalogue No.: abx029833



This gene was identified by homology to other species. Its encoded protein is approximately 78-88% identical to a predicted sheep protein of unknown function. The protein is also approximately 25% identical to the Drosophila protein suppressor of hairy wing, which is a leucine zipper protein that represses the function of transcriptional enhancers of the gypsy retrotransposon.

**Target:** Zinc Finger Protein 280B (ZNF280B)

**Clonality:** Polyclonal

**Reactivity:** Human

**Tested Applications:** ELISA, WB

**Host:** Rabbit

**Recommended dilutions:** WB: 1/1000. Optimal dilutions/concentrations should be determined by the end user.

**Conjugation:** Unconjugated

**Immunogen:** KLH-conjugated synthetic peptide between 60-89 amino acids from the N-terminal region of human ZNF280B.

**Isotype:** IgG

**Form:** Liquid

**Purification:** Purified through a protein A column, followed by peptide affinity purification.

**Storage:** Aliquot and store at -20°C. Avoid repeated freeze/thaw cycles.

**UniProt Primary AC:** Q86YH2 ([UniProt](#), [ExPASy](#))

**Gene Symbol:** ZNF280B

# Datasheet

Version: 4.0.0

Revision date: 16 Mar 2025



**KEGG:** hsa:140883

**String:** [9606.ENSP00000480958](#)

**Molecular Weight:** Calculated MW: 61.6 kDa

**Buffer:** PBS containing 0.09% sodium azide.

**Note:** THIS PRODUCT IS FOR RESEARCH USE ONLY. NOT FOR USE IN DIAGNOSTIC, THERAPEUTIC OR COSMETIC PROCEDURES. NOT FOR HUMAN OR ANIMAL CONSUMPTION.

For Reference Only