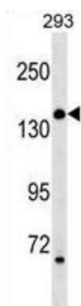


Rho Guanine Nucleotide Exchange Factor 18 (ARHGEF18) Antibody

Catalogue No.: abx029859



Rho GTPases are GTP binding proteins that regulate a wide spectrum of cellular functions. These cellular processes include cytoskeletal rearrangements, gene transcription, cell growth and motility. Activation of Rho GTPases is under the direct control of guanine nucleotide exchange factors (GEFs). The protein encoded by this gene is a guanine nucleotide exchange factor and belongs to the Rho GTPase GFE family. Family members share a common feature, a Dbl (DH) homology domain followed by a pleckstrin (PH) homology domain. Alternatively spliced transcript variants encoding different isoforms have been identified.

Target: Rho Guanine Nucleotide Exchange Factor 18 (ARHGEF18)

Clonality: Polyclonal

Reactivity: Human

Tested Applications: ELISA, WB

Host: Rabbit

Recommended dilutions: WB: 1/1000. Optimal dilutions/concentrations should be determined by the end user.

Conjugation: Unconjugated

Immunogen: KLH-conjugated synthetic peptide between 91-119 amino acids from the N-terminal region of human ARHGEF18.

Isotype: IgG

Form: Liquid

Purification: Purified through a protein A column, followed by peptide affinity purification.

Storage: Aliquot and store at -20°C. Avoid repeated freeze/thaw cycles.

UniProt Primary AC: Q6ZSZ5 ([UniProt](#), [ExPASy](#))

Datasheet

Version: 3.0.0

Revision date: 02 May 2025



Gene Symbol: ARHGEF18

KEGG: hsa:23370

String: [9606.ENSP00000352995](#)

Molecular Weight: Calculated MW: 152 kDa

Buffer: PBS containing 0.09% sodium azide.

Note: THIS PRODUCT IS FOR RESEARCH USE ONLY. NOT FOR USE IN DIAGNOSTIC, THERAPEUTIC OR COSMETIC PROCEDURES. NOT FOR HUMAN OR ANIMAL CONSUMPTION.

For Reference Only