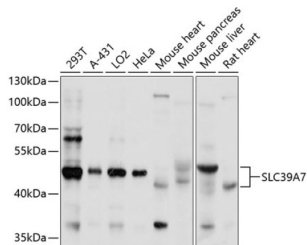


Solute Carrier Family 39, Member 7 (SLC39A7) Antibody

Catalogue No.: abx002387



Western blot analysis of various lysates using SLC39A7 Antibody at 1/1000 dilution.
Secondary antibody: HRP-conjugated Goat anti-Rabbit IgG (H+L) at 1/10000 dilution.
Lysates/proteins: 25 µg per lane. Blocking buffer: 3% nonfat dry milk in TBST. Exposure time: 20s.

SLC39A7 Antibody is a Rabbit Polyclonal antibody against SLC39A7. The protein encoded by this gene transports zinc from the Golgi and endoplasmic reticulum to the cytoplasm. This transport may be important for activation of tyrosine kinases, some of which could be involved in cancer progression. Therefore, modulation of the encoded protein could be useful as a therapeutic agent against cancer. Alternative splicing results in multiple transcript variants.

| | |
|-------------------------------|---|
| Target: | Solute Carrier Family 39, Member 7 (SLC39A7) |
| Clonality: | Polyclonal |
| Reactivity: | Human, Mouse, Rat |
| Tested Applications: | ELISA, WB |
| Host: | Rabbit |
| Recommended dilutions: | ELISA: 1 µg/ml, WB: 1/1000 - 1/3000. Optimal dilutions/concentrations should be determined by the end user. |
| Conjugation: | Unconjugated |
| Immunogen: | Recombinant fusion protein containing a sequence corresponding to amino acids 235-380 of human SLC39A7. |
| Isotype: | IgG |
| Form: | Liquid |
| Purification: | Purified by affinity chromatography. |
| Storage: | Aliquot and store at -20°C. Avoid repeated freeze/thaw cycles. |
| UniProt Primary AC: | Q92504 (UniProt , ExPASy) |
| Gene Symbol: | SLC39A7 |

Datasheet

Version: 3.0.0

Revision date: 21 Jun 2025



GeneID: [7922](#)

NCBI Accession: NP_008910.2

KEGG: hsa:7922

String: [9606.ENSP00000363809](#)

Molecular Weight: Calculated MW: 50 kDa
Observed MW: 50 kDa

Buffer: PBS, pH 7.3, containing 0.02% sodium azide, 50% glycerol.

Concentration: 4.06 mg/ml

Note: THIS PRODUCT IS FOR RESEARCH USE ONLY. NOT FOR USE IN DIAGNOSTIC, THERAPEUTIC OR COSMETIC PROCEDURES. NOT FOR HUMAN OR ANIMAL CONSUMPTION.

For Reference Only