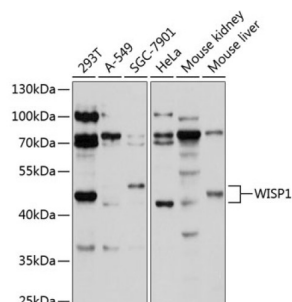


WNT1 Inducible Signaling Pathway Protein 1 / WISP1 (CCN4) Antibody

Catalogue No.: abx002388



Western blot analysis of extracts of various cell lines using WISP1 Antibody (1/1000 dilution).

WISP1 Antibody is a Rabbit Polyclonal antibody against WISP1. This gene encodes a member of the WNT1 inducible signaling pathway (WISP) protein subfamily, which belongs to the connective tissue growth factor (CTGF) family. WNT1 is a member of a family of cysteine-rich, glycosylated signaling proteins that mediate diverse developmental processes. The CTGF family members are characterized by four conserved cysteine-rich domains: insulin-like growth factor-binding domain, von Willebrand factor type C module, thrombospondin domain and C-terminal cystine knot-like domain. This gene may be downstream in the WNT1 signaling pathway that is relevant to malignant transformation. It is expressed at a high level in fibroblast cells, and overexpressed in colon tumors. The encoded protein binds to decorin and biglycan, two members of a family of small leucine-rich proteoglycans present in the extracellular matrix of connective tissue, and possibly prevents the inhibitory activity of decorin and biglycan in tumor cell proliferation. It also attenuates p53-mediated apoptosis in response to DNA damage through activation of the Akt kinase. It is 83% identical to the mouse protein at the amino acid level. Multiple alternatively spliced transcript variants have been identified.

Target: WNT1 Inducible Signaling Pathway Protein 1 / WISP1 (CCN4)

Clonality: Polyclonal

Reactivity: Human, Mouse

Tested Applications: WB

Host: Rabbit

Recommended dilutions: WB: 1/500 - 1/2000. Optimal dilutions/concentrations should be determined by the end user.

Conjugation: Unconjugated

Immunogen: Recombinant fusion protein corresponding to human WISP1

Isotype: IgG

Form: Liquid

Purification: Purified by affinity chromatography.

Datasheet

Version: 4.0.0

Revision date: 30 Aug 2025



Storage: Aliquot and store at -20°C. Avoid repeated freeze/thaw cycles.

UniProt Primary AC: O95388 ([UniProt](#), [ExPASy](#))

Gene Symbol: WISP1

GeneID: [8840](#)

NCBI Accession: NP_003873.1

KEGG: hsa:8840

String: [9606.ENSP00000250160](#)

Molecular Weight: Calculated MW: 13 kDa/16 kDa/21 kDa/30 kDa/40 kDa
Observed MW: 45 kDa

Buffer: PBS, pH 7.3, containing 0.02% sodium azide, 50% glycerol.

Concentration: 1 mg/ml

Note: THIS PRODUCT IS FOR RESEARCH USE ONLY. NOT FOR USE IN DIAGNOSTIC, THERAPEUTIC OR COSMETIC PROCEDURES. NOT FOR HUMAN OR ANIMAL CONSUMPTION.