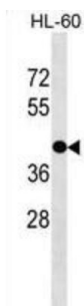


## Probable G-Protein Coupled Receptor 88 (GPR88) Antibody

Catalogue No.: abx029914



This product is currently in development. The lead time for this product may be several months. Please contact us at [info@abbexa.com](mailto:info@abbexa.com) for an updated lead time before purchasing this product.

This product is currently in development. The lead time for this product may be several months. Please contact us at [info@abbexa.com](mailto:info@abbexa.com) for an updated lead time before purchasing this product.

GPR88 is an orphan receptor.

<b>Target:</b>	Probable G-Protein Coupled Receptor 88 (GPR88)
<b>Clonality:</b>	Polyclonal
<b>Reactivity:</b>	Human
<b>Tested Applications:</b>	ELISA, WB
<b>Host:</b>	Rabbit
<b>Recommended dilutions:</b>	WB: 1/1000. Optimal dilutions/concentrations should be determined by the end user.
<b>Conjugation:</b>	Unconjugated
<b>Immunogen:</b>	KLH-conjugated synthetic peptide between 325-352 amino acids from the C-terminal region of human GPR88.
<b>Isotype:</b>	IgG
<b>Form:</b>	Liquid
<b>Purification:</b>	Purified through a protein A column, followed by peptide affinity purification.
<b>Storage:</b>	Aliquot and store at -20°C. Avoid repeated freeze/thaw cycles.

# Datasheet

Version: 3.0.0

Revision date: 27 Sep 2025



**UniProt Primary AC:** Q9GZN0 ([UniProt](#), [ExPASy](#))

**Gene Symbol:** GPR88

**String:** [9606.ENSP00000314223](#)

**Molecular Weight:** Calculated MW: 40.2 kDa

**Buffer:** PBS containing 0.09% sodium azide.

**Specificity:** Predicted to react with Mouse and Rat GPR88.

**Note:** THIS PRODUCT IS FOR RESEARCH USE ONLY. NOT FOR USE IN DIAGNOSTIC, THERAPEUTIC OR COSMETIC PROCEDURES. NOT FOR HUMAN OR ANIMAL CONSUMPTION.

For Reference Only