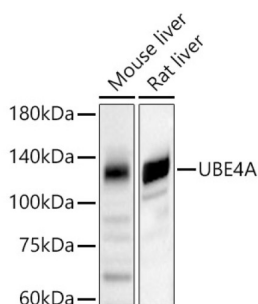
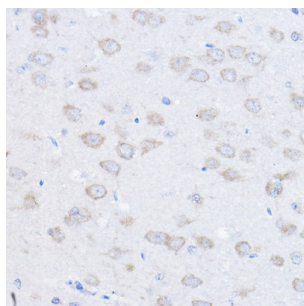


Ubiquitin Conjugation Factor E4 A (UBE4A) Antibody

Catalogue No.: abx002394



Western blot analysis of various lysates, using UBE4A Antibody at 1/3000 dilution. Secondary antibody: HRP-conjugated Goat anti-Rabbit IgG (H+L) at 1/10000 dilution. Lysates/proteins: 25 µg per lane. Blocking buffer: 3% nonfat dry milk in TBST. Exposure time: 60s.



Immunohistochemistry analysis of paraffin-embedded Rat brain using UBE4A Antibody at dilution of 1/100 (40x lens). High pressure antigen retrieval performed in 0.01 M Citrate buffer (pH 6.0) prior to IHC staining.

UBE4A Antibody is a Rabbit Polyclonal antibody against UBE4A. This gene encodes a member of the U-box ubiquitin ligase family. The encoded protein is involved in multiubiquitin chain assembly and plays a critical role in chromosome condensation and separation through the polyubiquitination of securin. Autoantibodies against the encoded protein may be markers for scleroderma and Crohn's disease. A pseudogene of this gene is located on the long arm of chromosome 3. Alternatively spliced transcript variants encoding multiple isoforms have been observed for this gene.

Target: Ubiquitin Conjugation Factor E4 A (UBE4A)

Clonality: Polyclonal

Reactivity: Human, Mouse, Rat

Tested Applications: ELISA, WB, IHC

Host: Rabbit

Recommended dilutions: ELISA: 1 µg/ml, WB: 1/1000 - 1/5000, IHC-P: 1/50 - 1/200. Not tested in IHC-F. Optimal dilutions/concentrations should be determined by the end user.

Conjugation: Unconjugated

Immunogen: Recombinant protein corresponding to UBE4A. The exact sequence is proprietary.

Isotype: IgG

Datasheet

Version: 5.0.0

Revision date: 30 Aug 2025



Form:	Liquid
Purification:	Purified by affinity chromatography.
Storage:	Aliquot and store at -20°C. Avoid repeated freeze/thaw cycles.
UniProt Primary AC:	Q14139 (UniProt , ExPASy)
Gene Symbol:	UBE4A
GeneID:	9354
NCBI Accession:	NP_001191006.1
KEGG:	hsa:9354
String:	9606.ENSP00000387362
Molecular Weight:	Calculated MW: 123 kDa Observed MW: 123 kDa
Buffer:	PBS, pH 7.3, containing 0.02% sodium azide, 50% glycerol.
Concentration:	> 0.2 mg/ml
Note:	THIS PRODUCT IS FOR RESEARCH USE ONLY. NOT FOR USE IN DIAGNOSTIC, THERAPEUTIC OR COSMETIC PROCEDURES. NOT FOR HUMAN OR ANIMAL CONSUMPTION.