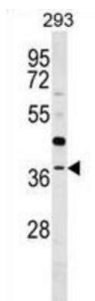


## RNA (guanine-9-)-Methyltransferase Domain-Containing Protein 3 (RG9MTD3) Antibody

Catalogue No.: abx029984



RG9MTD3 is probable RNA methyltransferase (By similarity).

<b>Target:</b>	RNA (guanine-9-)-Methyltransferase Domain-Containing Protein 3 (RG9MTD3)
<b>Clonality:</b>	Polyclonal
<b>Reactivity:</b>	Human
<b>Tested Applications:</b>	ELISA, WB
<b>Host:</b>	Rabbit
<b>Recommended dilutions:</b>	WB: 1/1000. Optimal dilutions/concentrations should be determined by the end user.
<b>Conjugation:</b>	Unconjugated
<b>Immunogen:</b>	KLH-conjugated synthetic peptide between 135-162 amino acids from the Central region of human RG9MTD3.
<b>Isotype:</b>	IgG
<b>Form:</b>	Liquid
<b>Purification:</b>	Purified through a protein A column, followed by peptide affinity purification.
<b>Storage:</b>	Aliquot and store at -20°C. Avoid repeated freeze/thaw cycles.
<b>UniProt Primary AC:</b>	Q6PF06 ( <a href="#">UniProt</a> , <a href="#">ExPASy</a> )
<b>Gene Symbol:</b>	TRMT10B

# Datasheet

Version: 3.0.0

Revision date: 23 Jul 2025



**KEGG:** hsa:158234

**String:** [9606.ENSP00000297994](#)

**Molecular Weight:** Calculated MW: 36.1 kDa

**Buffer:** PBS containing 0.09% sodium azide.

**Specificity:** Predicted to react with Cow TRMT10B.

**Note:** THIS PRODUCT IS FOR RESEARCH USE ONLY. NOT FOR USE IN DIAGNOSTIC, THERAPEUTIC OR COSMETIC PROCEDURES. NOT FOR HUMAN OR ANIMAL CONSUMPTION.

For Reference Only