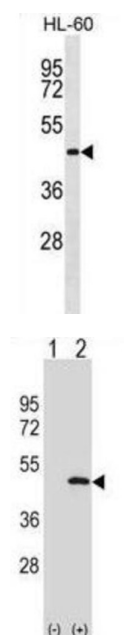


## Ubiquitin-Like-Conjugating Enzyme ATG3 (ATG3) Antibody

Catalogue No.: abx029991



Macroautophagy is the major inducible pathway for the general turnover of cytoplasmic constituents in eukaryotic cells, it is also responsible for the degradation of active cytoplasmic enzymes and organelles during nutrient starvation. Macroautophagy involves the formation of double-membrane bound autophagosomes which enclose the cytoplasmic constituent targeted for degradation in a membrane bound structure, which then fuse with the lysosome (or vacuole) releasing a single-membrane bound autophagic bodies which are then degraded within the lysosome (or vacuole). APG3L is an E2-like conjugating enzyme facilitating covalent binding of APG8 (MAP1LC3) to phosphatidylethanolamine (PE). APG7 (an E1-like enzyme) facilitates this reaction by forming an E1-E2 complex with APG3. Formation of the PE conjugate is essential for autophagy.

**Target:** Ubiquitin-Like-Conjugating Enzyme ATG3 (ATG3)

**Clonality:** Polyclonal

**Reactivity:** Human

**Tested Applications:** ELISA, WB

**Host:** Rabbit

**Recommended dilutions:** WB: 1/1000. Optimal dilutions/concentrations should be determined by the end user.

**Conjugation:** Unconjugated

**Immunogen:** KLH-conjugated synthetic peptide between 83-112 amino acids from the C-terminal region of human ATG3.

# Datasheet

Version: 2.0.0  
Revision date: 10 Sep 2025



Isotype:	IgG
Form:	Liquid
Purification:	Purified Rabbit Polyclonal Antibody.
Storage:	Aliquot and store at -20°C. Avoid repeated freeze/thaw cycles.
UniProt Primary AC:	Q9NT62 ( <a href="#">UniProt</a> , <a href="#">ExPASy</a> )
Gene Symbol:	ATG3
GeneID:	<a href="#">64422</a>
OMIM:	<a href="#">609606</a>
HGNC:	20962
KEGG:	hsa:64422
Ensembl:	ENSG00000144848
String:	<a href="#">9606.ENSP00000283290</a>
Molecular Weight:	Calculated MW: 35.9 kDa
Buffer:	PBS containing 0.09% sodium azide.
Specificity:	Predicted to react with Mouse, Rat and Cow ATG3.
Note:	THIS PRODUCT IS FOR RESEARCH USE ONLY. NOT FOR USE IN DIAGNOSTIC, THERAPEUTIC OR COSMETIC PROCEDURES. NOT FOR HUMAN OR ANIMAL CONSUMPTION.