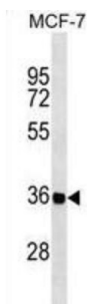


## Ras-Like Protein Family Member 12 (RASL12) Antibody

Catalogue No.: abx030024



RASL12 belongs to the small GTPase superfamily. Ras family.

**Target:** Ras-Like Protein Family Member 12 (RASL12)

**Clonality:** Polyclonal

**Reactivity:** Human

**Tested Applications:** ELISA, WB

**Host:** Rabbit

**Recommended dilutions:** WB: 1/1000. Optimal dilutions/concentrations should be determined by the end user.

**Conjugation:** Unconjugated

**Immunogen:** KLH-conjugated synthetic peptide between 229-255 amino acids from the C-terminal region of human RASL12.

**Isotype:** IgG

**Form:** Liquid

**Purification:** Purified through a protein A column, followed by peptide affinity purification.

**Storage:** Aliquot and store at -20°C. Avoid repeated freeze/thaw cycles.

**UniProt Primary AC:** Q9NYN1 ([UniProt](#), [ExPASy](#))

**Gene Symbol:** RASL12

**String:** [9606.ENSP00000220062](#)

# Datasheet

Version: 2.0.0

Revision date: 20 Aug 2025



**Molecular Weight:** Calculated MW: 29.7 kDa

**Buffer:** PBS containing 0.09% sodium azide.

**Specificity:** Predicted to react with Mouse and Cow RASL12.

**Note:** THIS PRODUCT IS FOR RESEARCH USE ONLY. NOT FOR USE IN DIAGNOSTIC, THERAPEUTIC OR COSMETIC PROCEDURES. NOT FOR HUMAN OR ANIMAL CONSUMPTION.

For Reference Only