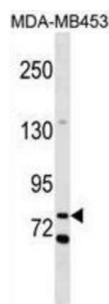


Collectin 12 (COLEC12) Antibody

Catalogue No.: abx030067



Western blot analysis of MDA-MB453 cell lysates using Collectin 12 (COLEC12) Antibody.

This gene encodes a member of the C-lectin family, proteins that possess collagen-like sequences and carbohydrate recognition domains. This protein is a scavenger receptor, a cell surface glycoprotein that can bind to carbohydrate antigens on microorganisms facilitating their recognition and removal. In addition, these receptors can recognize oxidized phospholipids so they may also participate in removing oxidatively damaged or apoptotic cells.

Target: Collectin 12 (COLEC12)

Clonality: Polyclonal

Reactivity: Human

Tested Applications: ELISA, WB

Host: Rabbit

Recommended dilutions: WB: 1/1000. Optimal dilutions/concentrations should be determined by the end user.

Conjugation: Unconjugated

Immunogen: KLH-conjugated synthetic peptide between 71-100 amino acids from the N-terminal region of Human COLEC12.

Isotype: IgG

Form: Liquid

Purification: Purified by protein A affinity chromatography, followed by peptide affinity purification.

Storage: Aliquot and store at -20°C. Avoid repeated freeze/thaw cycles.

UniProt Primary AC: Q5KU26 ([UniProt](#), [ExPASy](#))

Gene Symbol: COLEC12

Datasheet

Version: 6.0.0

Revision date: 05 Jun 2025



KEGG: hsa:81035

String: [9606.ENSP00000383115](#)

Molecular Weight: Calculated MW: 81.5 kDa

Buffer: PBS containing 0.09% sodium azide.

Specificity: Predicted to react with Rat and Cow COLEC12.

Concentration: 0.5 mg/ml

Note: THIS PRODUCT IS FOR RESEARCH USE ONLY. NOT FOR USE IN DIAGNOSTIC, THERAPEUTIC OR COSMETIC PROCEDURES. NOT FOR HUMAN OR ANIMAL CONSUMPTION.

For Reference Only