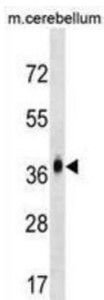


Monocyte To Macrophage Differentiation Factor 2 (MMD2) Antibody

Catalogue No.: abx030071



MMD2 is a homologue of MMD and both proteins are members of the so far uncharacterized Hemolysin-III (Hly-III) family, and are atypical members of the PAQR family. PAQR10/MMD2, has recently (G.

Target:	Monocyte To Macrophage Differentiation Factor 2 (MMD2)
Clonality:	Polyclonal
Reactivity:	Human, Mouse
Tested Applications:	ELISA, WB
Host:	Rabbit
Recommended dilutions:	WB: 1/1000. Optimal dilutions/concentrations should be determined by the end user.
Conjugation:	Unconjugated
Immunogen:	KLH-conjugated synthetic peptide between 6-35 amino acids from the N-terminal region of human MMD2.
Isotype:	IgG
Form:	Liquid
Purification:	Purified through a protein A column, followed by peptide affinity purification.
Storage:	Aliquot and store at -20°C. Avoid repeated freeze/thaw cycles.
UniProt Primary AC:	Q8IY49 (UniProt , ExPASy)
Gene Symbol:	MMD2

Datasheet

Version: 1.0.0

Revision date: 25 Jun 2025



KEGG: hsa:221938

String: [9606.ENSP00000384690](#)

Molecular Weight: Calculated MW: 31.3 kDa

Buffer: PBS containing 0.09% sodium azide.

Note: THIS PRODUCT IS FOR RESEARCH USE ONLY. NOT FOR USE IN DIAGNOSTIC, THERAPEUTIC OR COSMETIC PROCEDURES. NOT FOR HUMAN OR ANIMAL CONSUMPTION.

For Reference Only