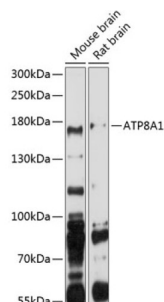


Phospholipid-Transporting ATPase IA (ATP8A1) Antibody

Catalogue No.: abx002408



Western blot analysis of extracts of various cell lines using ATP8A1 Antibody (1/1000 dilution).

ATP8A1 Antibody is a Rabbit Polyclonal antibody against ATP8A1. The P-type adenosinetriphosphatases (P-type ATPases) are a family of proteins which use the free energy of ATP hydrolysis to drive uphill transport of ions across membranes. Several subfamilies of P-type ATPases have been identified. One subfamily catalyzes transport of heavy metal ions. Another subfamily transports non-heavy metal ions (NMHI). The protein encoded by this gene is a member of the third subfamily of P-type ATPases and acts to transport amphipaths, such as phosphatidylserine. Two transcript variants encoding different isoforms have been found for this gene.

Target:	Phospholipid-Transporting ATPase IA (ATP8A1)
Clonality:	Polyclonal
Reactivity:	Human, Mouse, Rat
Tested Applications:	WB
Host:	Rabbit
Recommended dilutions:	WB: 1/500 - 1/2000. Optimal dilutions/concentrations should be determined by the end user.
Conjugation:	Unconjugated
Immunogen:	Recombinant fusion protein corresponding to human ATP8A1
Isotype:	IgG
Form:	Liquid
Purification:	Purified by affinity chromatography.
Storage:	Aliquot and store at -20°C. Avoid repeated freeze/thaw cycles.
UniProt Primary AC:	Q9Y2Q0 (UniProt , ExPASy)

Datasheet

Version: 4.0.0
Revision date: 09 Jun 2025



Gene Symbol: ATP8A1

GeneID: [10396](#)

NCBI Accession: NP_001098999.1

String: [9606.ENSP00000371084](#)

Molecular Weight: Calculated MW: 129 kDa/131 kDa
Observed MW: 170 kDa

Buffer: PBS, pH 7.3, containing 0.02% sodium azide, 50% glycerol.

Concentration: 1 mg/ml

Note: THIS PRODUCT IS FOR RESEARCH USE ONLY. NOT FOR USE IN DIAGNOSTIC, THERAPEUTIC OR COSMETIC PROCEDURES. NOT FOR HUMAN OR ANIMAL CONSUMPTION.

For Reference Only