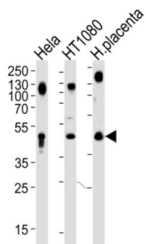
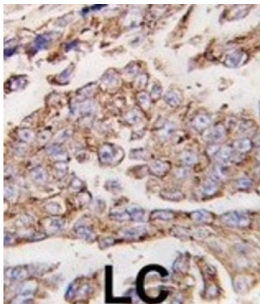
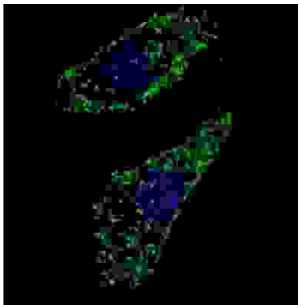


Lysosomal Associated Membrane Protein 1 (LAMP1) Antibody

Catalogue No.: abx030127



LAMP1 is a member of a family of membrane glycoproteins. This glycoprotein provides selectins with carbohydrate ligands. It may also play a role in tumor cell metastasis.

Target: Lysosomal Associated Membrane Protein 1 (LAMP1)

Clonality: Polyclonal

Reactivity: Human, Mouse

Tested Applications: ELISA, WB, IHC

Host: Rabbit

Recommended dilutions: WB: 1/1000, IHC-P: 1/10 - 1/50. Not tested in IHC-F. Optimal dilutions/concentrations should be determined by the end user.

Datasheet

Version: 2.0.0
Revision date: 01 May 2025



Conjugation:	Unconjugated
Immunogen:	KLH-conjugated synthetic peptide between 125-154 amino acids from the N-terminal region of human LAMP1.
Isotype:	IgG
Form:	Liquid
Purification:	Purified through a protein A column, followed by peptide affinity purification. The antibody was eluted with high and low pH buffers and neutralized immediately, followed by dialysis against PBS.
Storage:	Aliquot and store at -20°C. Avoid repeated freeze/thaw cycles.
UniProt Primary AC:	P11279 (UniProt , ExpASY)
NCBI Accession:	NP_005552.3
KEGG:	hsa:3916
String:	9606.ENSP00000333298
Molecular Weight:	Calculated MW: 44.9 kDa
Buffer:	PBS containing 0.09% sodium azide.
Note:	THIS PRODUCT IS FOR RESEARCH USE ONLY. NOT FOR USE IN DIAGNOSTIC, THERAPEUTIC OR COSMETIC PROCEDURES. NOT FOR HUMAN OR ANIMAL CONSUMPTION.