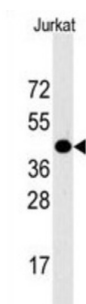


Lysosomal Associated Membrane Protein 1 (LAMP1) Antibody

Catalogue No.: abx030128



WB analysis of Jurkat cell lysate (35 µg/lane), using LAMP1 antibody. LAMP1 detection is demonstrated by the arrow.

LAMP1 is a member of a family of membrane glycoproteins. This glycoprotein provides selectins with carbohydrate ligands. It may also play a role in tumor cell metastasis.

Target:	Lysosomal Associated Membrane Protein 1 (LAMP1)
Clonality:	Polyclonal
Reactivity:	Human
Tested Applications:	ELISA, WB
Host:	Rabbit
Recommended dilutions:	WB: 1/1000. Optimal dilutions/concentrations should be determined by the end user.
Conjugation:	Unconjugated
Immunogen:	KLH-conjugated synthetic peptide between 391-417 amino acids from the C-terminal region of Human LAMP1.
Isotype:	IgG
Form:	Liquid
Purification:	Purified through a protein A column, followed by peptide affinity purification.
Storage:	Aliquot and store at -20°C. Avoid repeated freeze/thaw cycles.
UniProt Primary AC:	P11279 (UniProt , ExPASy)
KEGG:	hsa:3916

Datasheet

Version: 4.0.0

Revision date: 21 Aug 2025



String: [9606.ENSF00000333298](#)

Buffer: PBS containing 0.09% sodium azide.

Specificity: Predicted to react with Mouse, Rat, Cow, Chicken and Hamster LAMP1.

Concentration: 0.45 mg/ml

Note: THIS PRODUCT IS FOR RESEARCH USE ONLY. NOT FOR USE IN DIAGNOSTIC, THERAPEUTIC OR COSMETIC PROCEDURES. NOT FOR HUMAN OR ANIMAL CONSUMPTION.

For Reference Only