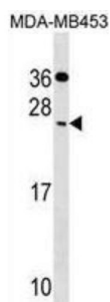


Cell Death Inducing DFFA Like Effector C (CIDEc) Antibody

Catalogue No.: abx030135



CIDEc Antibody western blot analysis in MDA-MB453 cell line lysates (35 ug/lane). This demonstrates the CIDEc antibody detected the CIDEc protein (arrow).

DNA fragmentation factor (DFF) induces the fragmentation of DNA associated with apoptosis. A novel family of cell death-inducing DFF45 (MIM 601882) like effectors (CIDEs), including CIDEc, can also promote apoptosis.

Target:	Cell Death Inducing DFFA Like Effector C (CIDEc)
Clonality:	Polyclonal
Reactivity:	Human
Tested Applications:	ELISA, WB
Host:	Rabbit
Recommended dilutions:	WB: 1/1000. Optimal dilutions/concentrations should be determined by the end user.
Conjugation:	Unconjugated
Immunogen:	KLH-conjugated synthetic peptide between 97-126 amino acids from the Central region of human CIDEc.
Isotype:	IgG
Form:	Liquid
Purification:	This antibody is purified through a protein A column, followed by peptide affinity purification.
Storage:	Aliquot and store at -20°C. Avoid repeated freeze/thaw cycles.
UniProt Primary AC:	Q96AQ7 (UniProt , ExPASy)
KEGG:	hsa:63924

Datasheet

Version: 2.0.0

Revision date: 21 Jun 2025



String: [9606.ENSF00000373328](#)

Molecular Weight: Calculated MW: 26.8 kDa

Buffer: PBS containing 0.09% sodium azide.

Note: THIS PRODUCT IS FOR RESEARCH USE ONLY. NOT FOR USE IN DIAGNOSTIC, THERAPEUTIC OR COSMETIC PROCEDURES. NOT FOR HUMAN OR ANIMAL CONSUMPTION.

For Reference Only