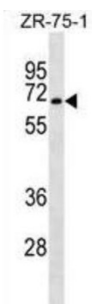


SGK071 Antibody

Catalogue No.: abx030142



C9orf96 belongs to the serine/threonine protein kinase family. However, the protein kinase domain is predicted to be catalytically inactive. The specific function of this protein is unknown.

Target: SGK071

Clonality: Polyclonal

Reactivity: Human

Tested Applications: ELISA, WB

Host: Rabbit

Recommended dilutions: WB: 1/1000. Optimal dilutions/concentrations should be determined by the end user.

Conjugation: Unconjugated

Immunogen: KLH-conjugated synthetic peptide between 583-609 amino acids from the C-terminal region of human SGK071.

Isotype: IgG

Form: Liquid

Purification: Purified through a protein A column, followed by peptide affinity purification.

Storage: Aliquot and store at -20°C. Avoid repeated freeze/thaw cycles.

UniProt Primary AC: Q8NE28 ([UniProt](#), [ExPASy](#))

Gene Symbol: STKLD1

Datasheet

Version: 2.0.0

Revision date: 13 Aug 2025



KEGG: hsa:169436

String: [9606.ENSP00000361025](#)

Molecular Weight: Calculated MW: 75.7 kDa

Buffer: PBS containing 0.09% sodium azide.

Note: THIS PRODUCT IS FOR RESEARCH USE ONLY. NOT FOR USE IN DIAGNOSTIC, THERAPEUTIC OR COSMETIC PROCEDURES. NOT FOR HUMAN OR ANIMAL CONSUMPTION.

For Reference Only