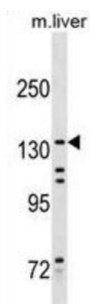


Kinesin Family Member 15 (KIF15) Antibody

Catalogue No.: abx030162



Plus-end directed kinesin-like motor enzyme involved in mitotic spindle assembly (By similarity).

Target:	Kinesin Family Member 15 (KIF15)
Clonality:	Polyclonal
Reactivity:	Human, Mouse
Tested Applications:	ELISA, WB
Host:	Rabbit
Recommended dilutions:	WB: 1/1000. Optimal dilutions/concentrations should be determined by the end user.
Conjugation:	Unconjugated
Immunogen:	KLH-conjugated synthetic peptide between 777-804 amino acids from the Central region of human KIF15.
Isotype:	IgG
Form:	Liquid
Purification:	Purified through a protein A column, followed by peptide affinity purification.
Storage:	Aliquot and store at -20°C. Avoid repeated freeze/thaw cycles.
UniProt Primary AC:	Q9NS87 (UniProt , ExPASy)
Gene Symbol:	KIF15
String:	9606.ENSP00000324020

Datasheet

Version: 4.0.0

Revision date: 18 Jul 2025



Molecular Weight: Calculated MW: 160 kDa

Buffer: PBS containing 0.09% sodium azide.

Note: THIS PRODUCT IS FOR RESEARCH USE ONLY. NOT FOR USE IN DIAGNOSTIC, THERAPEUTIC OR COSMETIC PROCEDURES. NOT FOR HUMAN OR ANIMAL CONSUMPTION.

For Reference Only