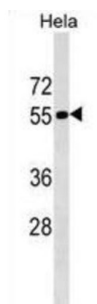


Tigger Transposable Element-Derived Protein 1 (TIGD1) Antibody

Catalogue No.: abx030179



The protein encoded by this gene belongs to the tigger subfamily of the pogo superfamily of DNA-mediated transposons in humans. These proteins are related to DNA transposons found in fungi and nematodes, and more distantly to the Tc1 and mariner transposases. They are also very similar to the major mammalian centromere protein B. The exact function of this gene is not known.

| | |
|-------------------------------|---|
| Target: | Tigger Transposable Element-Derived Protein 1 (TIGD1) |
| Clonality: | Polyclonal |
| Reactivity: | Human |
| Tested Applications: | ELISA, WB |
| Host: | Rabbit |
| Recommended dilutions: | WB: 1/1000. Optimal dilutions/concentrations should be determined by the end user. |
| Conjugation: | Unconjugated |
| Immunogen: | KLH-conjugated synthetic peptide between 123-149 amino acids from the N-terminal region of human TIGD1. |
| Isotype: | IgG |
| Form: | Liquid |
| Purification: | Purified through a protein A column, followed by peptide affinity purification. |
| Storage: | Aliquot and store at -20°C. Avoid repeated freeze/thaw cycles. |
| UniProt Primary AC: | Q96MW7 (UniProt , ExPASy) |
| Gene Symbol: | TIGD1 |

Datasheet

Version: 2.0.0

Revision date: 18 Mar 2025



KEGG: hsa:200765

String: [9606.ENSP00000386186](#)

Molecular Weight: Calculated MW: 67.3 kDa

Buffer: PBS containing 0.09% sodium azide.

Note: THIS PRODUCT IS FOR RESEARCH USE ONLY. NOT FOR USE IN DIAGNOSTIC, THERAPEUTIC OR COSMETIC PROCEDURES. NOT FOR HUMAN OR ANIMAL CONSUMPTION.

For Reference Only