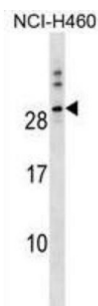


Protein Tweety Homolog 1 (TTYH1) Antibody

Catalogue No.: abx030182



This gene encodes a member of the tweety family of proteins. Members of this family function as chloride anion channels. The encoded protein functions as a calcium (2+) independent, volume-sensitive large conductance chloride (-) channel. Two transcript variants encoding distinct isoforms have been identified for this gene.

Target: Protein Tweety Homolog 1 (TTYH1)

Clonality: Polyclonal

Reactivity: Human

Tested Applications: ELISA, WB

Host: Rabbit

Recommended dilutions: WB: 1/1000. Optimal dilutions/concentrations should be determined by the end user.

Conjugation: Unconjugated

Immunogen: KLH-conjugated synthetic peptide between 2-28 amino acids from the N-terminal region of human TTYH1.

Isotype: IgG

Form: Liquid

Purification: Purified through a protein A column, followed by peptide affinity purification.

Storage: Aliquot and store at -20°C. Avoid repeated freeze/thaw cycles.

UniProt Primary AC: Q9H313 ([UniProt](#), [ExPASy](#))

Gene Symbol: TTYH1

Datasheet

Version: 2.0.0

Revision date: 17 Jul 2025



String: [9606.ENSPO0000365714](#)

Molecular Weight: Calculated MW: 49.1 kDa

Buffer: PBS containing 0.09% sodium azide.

Specificity: Predicted to react with Mouse, Rat, Cow and Monkey TTYH1.

Note: THIS PRODUCT IS FOR RESEARCH USE ONLY. NOT FOR USE IN DIAGNOSTIC, THERAPEUTIC OR COSMETIC PROCEDURES. NOT FOR HUMAN OR ANIMAL CONSUMPTION.

For Reference Only