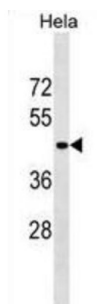


Serpin Family B Member 11 (gene/pseudogene) (SERPINB11) Antibody

Catalogue No.: abx030188



SerpinB11 is a serine proteinase inhibitor of the ovalbumin-like B clade of serpins. It was first discovered in human lung and prostate. Little is known about SerpinB11 tissue distribution and function. Splice variants of 305, 278 and 190 amino acids have been reported, with predicted masses of 33.97, 31.6 and 21.1 kDa respectively, and pIs of 8.11, 9.03 and 6.07 respectively. The 305 and 190 amino acid forms share the same aminotermminus as the 392 amino acid form. The 305 amino acid form has a deletion in residues 120-206, of the 392 amino acid form. The 190 amino acid form has a deletion in residues 57-259 relative to the long form. The 278 amino acid form starts at the third methionine, relative to the long form. All four forms contain the reactive center loop of the long form, but it is unknown if the shorter forms are active serpins. The predicted isoelectric points of SerpinB11 are significantly more basic than the other B clade serpins, and suggest a different localization or function for this serpin.

Target:	Serpin Family B Member 11 (gene/pseudogene) (SERPINB11)
Clonality:	Polyclonal
Reactivity:	Human
Tested Applications:	ELISA, WB
Host:	Rabbit
Recommended dilutions:	WB: 1/1000. Optimal dilutions/concentrations should be determined by the end user.
Conjugation:	Unconjugated
Immunogen:	KLH-conjugated synthetic peptide between 170-196 amino acids from the Central region of human SERPINB11.
Isotype:	IgG
Form:	Liquid
Purification:	Purified through a protein A column, followed by peptide affinity purification.
Storage:	Aliquot and store at -20°C. Avoid repeated freeze/thaw cycles.

Datasheet

Version: 2.0.0

Revision date: 08 Aug 2025



UniProt Primary AC: Q96P15 ([UniProt](#), [ExPASy](#))

Gene Symbol: SERPINB11

KEGG: hsa:89778

String: [9606.ENSP00000441497](#)

Molecular Weight: Calculated MW: 44.1 kDa

Buffer: PBS containing 0.09% sodium azide.

Note: THIS PRODUCT IS FOR RESEARCH USE ONLY. NOT FOR USE IN DIAGNOSTIC, THERAPEUTIC OR COSMETIC PROCEDURES. NOT FOR HUMAN OR ANIMAL CONSUMPTION.

For Reference Only