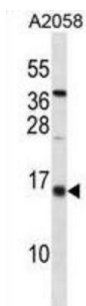


DNA-Binding Protein Inhibitor ID-3 (ID3) Antibody

Catalogue No.: abx030201



WB analysis of A2058 cell lysates (35 µg/lane) using DNA-Binding Protein Inhibitor ID-3 (ID3) antibody. ID3 protein detection is demonstrated by the arrow.

DNA-Binding Protein Inhibitor ID-3 (ID3) is a Rabbit polyclonal against DNA-Binding Protein Inhibitor ID-3 (ID3).

ID3 is a transcriptional regulator that lacks a basic DNA binding domain. It negatively regulates the basic helix-loop-helix (bHLH) transcription factors by forming heterodimers and inhibiting their DNA binding and transcriptional activity. It is implicated in regulating a variety of cellular processes, including cellular growth, senescence, differentiation, apoptosis, angiogenesis, and neoplastic transformation and is involved in myogenesis by inhibiting skeletal muscle and cardiac myocyte differentiation and promoting muscle precursor cells proliferation. It also inhibits the binding of E2A-containing protein complexes to muscle creatine kinase E-box enhancer and regulates the circadian clock by repressing the transcriptional activator activity of the CLOCK-BMAL1 heterodimer.

Target: DNA-Binding Protein Inhibitor ID-3 (ID3)

Clonality: Polyclonal

Reactivity: Human

Tested Applications: ELISA, WB

Host: Rabbit

Recommended dilutions: WB: 1/1000. Optimal dilutions/concentrations should be determined by the end user.

Conjugation: Unconjugated

Immunogen: KLH-conjugated synthetic peptide between 86-115 amino acids from the C-terminal region of Human ID3.

Isotype: IgG

Form: Liquid

Purification: Purified through a protein A column, followed by peptide affinity purification.

Datasheet

Version: 5.0.0

Revision date: 13 Aug 2025



Storage:	Aliquot and store at 2-8°C for up to 2 weeks, or at -20°C for long term storage. Avoid repeated freeze/thaw cycles.
UniProt Primary AC:	Q02535 (UniProt , ExPASy)
KEGG:	hsa:3399
String:	9606.ENSP00000363689
Molecular Weight:	Calculated MW: 13 kDa
Buffer:	PBS containing 0.09% sodium azide.
Concentration:	0.50 mg/ml
Note:	THIS PRODUCT IS FOR RESEARCH USE ONLY. NOT FOR USE IN DIAGNOSTIC, THERAPEUTIC OR COSMETIC PROCEDURES. NOT FOR HUMAN OR ANIMAL CONSUMPTION.

For Reference Only