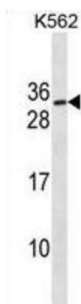


## Protein SSX3 (SSX3) Antibody

Catalogue No.: abx030257



The product of this gene belongs to the family of highly homologous synovial sarcoma X (SSX) breakpoint proteins. These proteins may function as transcriptional repressors. They are also capable of eliciting spontaneously humoral and cellular immune responses in cancer patients, and are potentially useful targets in cancer vaccine-based immunotherapy. SSX1, SSX2 and SSX4 genes have been involved in the t (X;18) translocation characteristically found in all synovial sarcomas. This gene appears not to be involved in this type of chromosome translocation. Two transcript variants encoding distinct isoforms have been identified for this gene.

**Target:** Protein SSX3 (SSX3)

**Clonality:** Polyclonal

**Reactivity:** Human

**Tested Applications:** ELISA, WB

**Host:** Rabbit

**Recommended dilutions:** WB: 1/1000. Optimal dilutions/concentrations should be determined by the end user.

**Conjugation:** Unconjugated

**Immunogen:** KLH-conjugated synthetic peptide between 53-80 amino acids from the Central region of human SSX3.

**Isotype:** IgG

**Form:** Liquid

**Purification:** Purified through a protein A column, followed by peptide affinity purification.

**Storage:** Aliquot and store at -20°C. Avoid repeated freeze/thaw cycles.

**UniProt Primary AC:** Q99909 ([UniProt](#), [ExPASy](#))

# Datasheet

Version: 3.0.0

Revision date: 17 Jul 2025



**Gene Symbol:** SSX3

**KEGG:** hsa:10214

**String:** [9606.ENSP00000298396](#)

**Molecular Weight:** Calculated MW: 21.7 kDa

**Buffer:** PBS containing 0.09% sodium azide.

**Note:** THIS PRODUCT IS FOR RESEARCH USE ONLY. NOT FOR USE IN DIAGNOSTIC, THERAPEUTIC OR COSMETIC PROCEDURES. NOT FOR HUMAN OR ANIMAL CONSUMPTION.

For Reference Only