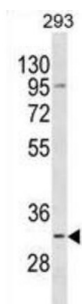


Translational Activator of Cytochrome C Oxidase 1 (TACO1) Antibody

Catalogue No.: abx030259



This gene encodes a mitochondrial protein that function as a translational activator of mitochondrially-encoded cytochrome c oxidase 1. Mutations in this gene are associated with Leigh syndrome.

Target:	Translational Activator of Cytochrome C Oxidase 1 (TACO1)
Clonality:	Polyclonal
Reactivity:	Human
Tested Applications:	ELISA, WB
Host:	Rabbit
Recommended dilutions:	WB: 1/1000. Optimal dilutions/concentrations should be determined by the end user.
Conjugation:	Unconjugated
Immunogen:	KLH-conjugated synthetic peptide between 50-77 amino acids from the N-terminal region of human TACO1.
Isotype:	IgG
Form:	Liquid
Purification:	Purified through a protein A column, followed by peptide affinity purification.
Storage:	Aliquot and store at -20°C. Avoid repeated freeze/thaw cycles.
UniProt Primary AC:	Q9BSH4 (UniProt , ExPASy)
Gene Symbol:	TACO1

Datasheet

Version: 2.0.0

Revision date: 02 May 2025



String: [9606.ENSF00000258975](#)

Molecular Weight: Calculated MW: 32.5 kDa

Buffer: PBS containing 0.09% sodium azide.

Note: THIS PRODUCT IS FOR RESEARCH USE ONLY. NOT FOR USE IN DIAGNOSTIC, THERAPEUTIC OR COSMETIC PROCEDURES. NOT FOR HUMAN OR ANIMAL CONSUMPTION.

For Reference Only