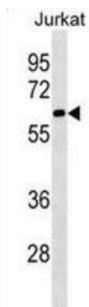


## SLU7 Homolog, Splicing Factor (SLU7) Antibody

Catalogue No.: abx030267



Pre-mRNA splicing occurs in two sequential transesterification steps. The protein encoded by this gene is a splicing factor that has been found to be essential during the second catalytic step in the pre-mRNA splicing process. It associates with the spliceosome and contains a zinc knuckle motif that is found in other splicing factors and is involved in protein-nucleic acid and protein-protein interactions. [provided by RefSeq].

<b>Target:</b>	SLU7 Homolog, Splicing Factor (SLU7)
<b>Clonality:</b>	Polyclonal
<b>Reactivity:</b>	Human
<b>Tested Applications:</b>	ELISA, WB
<b>Host:</b>	Rabbit
<b>Recommended dilutions:</b>	WB: 1/1000. Optimal dilutions/concentrations should be determined by the end user.
<b>Conjugation:</b>	Unconjugated
<b>Immunogen:</b>	KLH-conjugated synthetic peptide between 60-86 amino acids from the N-terminal region of human SLU7.
<b>Isotype:</b>	IgG
<b>Form:</b>	Liquid
<b>Purification:</b>	Purified through a protein A column, followed by peptide affinity purification.
<b>Storage:</b>	Aliquot and store at -20°C. Avoid repeated freeze/thaw cycles.
<b>UniProt Primary AC:</b>	O95391 ( <a href="#">UniProt</a> , <a href="#">ExPASy</a> )
<b>Gene Symbol:</b>	SLU7

# Datasheet

Version: 3.0.0

Revision date: 05 Sep 2025



**KEGG:** hsa:10569

**String:** [9606.ENSP00000297151](#)

**Molecular Weight:** Calculated MW: 68.4 kDa

**Buffer:** PBS containing 0.09% sodium azide.

**Specificity:** Predicted to react with Mouse, Rat, Cow, Chicken, Monkey, Zebrafish and Xenopus SLU7.

**Note:** THIS PRODUCT IS FOR RESEARCH USE ONLY. NOT FOR USE IN DIAGNOSTIC, THERAPEUTIC OR COSMETIC PROCEDURES. NOT FOR HUMAN OR ANIMAL CONSUMPTION.

For Reference Only