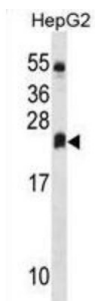


Dehydrogenase/reductase SDR Family Member 4-Like 2 (DHRS4L2) Antibody

Catalogue No.: abx030284



DHRS4L2 is probable oxidoreductase (By similarity).

Target:	Dehydrogenase/reductase SDR Family Member 4-Like 2 (DHRS4L2)
Clonality:	Polyclonal
Reactivity:	Human
Tested Applications:	ELISA, WB
Host:	Rabbit
Recommended dilutions:	WB: 1/1000. Optimal dilutions/concentrations should be determined by the end user.
Conjugation:	Unconjugated
Immunogen:	KLH-conjugated synthetic peptide between 132-158 amino acids from the Central region of human DHRS4L2.
Isotype:	IgG
Form:	Liquid
Purification:	Purified through a protein A column, followed by peptide affinity purification.
Storage:	Aliquot and store at -20°C. Avoid repeated freeze/thaw cycles.
UniProt Primary AC:	Q6PKH6 (UniProt , ExPASy)
Gene Symbol:	DHRS4L2

Datasheet

Version: 4.0.0

Revision date: 03 Oct 2025



String: [9606.ENSPO0000334801](#)

Molecular Weight: Calculated MW: 24.9 kDa

Buffer: PBS containing 0.09% sodium azide.

Specificity: Predicted to react with Pig and Rabbit DHRS4L2.

Note: THIS PRODUCT IS FOR RESEARCH USE ONLY. NOT FOR USE IN DIAGNOSTIC, THERAPEUTIC OR COSMETIC PROCEDURES. NOT FOR HUMAN OR ANIMAL CONSUMPTION.

For Reference Only