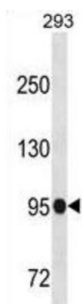


Scm-Like With Four MBT Domains Protein 1 (SFMBT1) Antibody

Catalogue No.: abx030291



This gene shares high similarity with the *Drosophila* Scm (sex comb on midleg) gene. It encodes a protein which contains four malignant brain tumor repeat (mbt) domains and may be involved in antigen recognition. Several alternative splice variants that encode the same protein have been characterized. [provided by RefSeq].

Target:	Scm-Like With Four MBT Domains Protein 1 (SFMBT1)
Clonality:	Polyclonal
Reactivity:	Human
Tested Applications:	ELISA, WB
Host:	Rabbit
Recommended dilutions:	WB: 1/1000. Optimal dilutions/concentrations should be determined by the end user.
Conjugation:	Unconjugated
Immunogen:	KLH-conjugated synthetic peptide between 20-47 amino acids from the N-terminal region of human SFMBT1.
Isotype:	IgG
Form:	Liquid
Purification:	Purified through a protein A column, followed by peptide affinity purification.
Storage:	Aliquot and store at -20°C. Avoid repeated freeze/thaw cycles.
UniProt Primary AC:	Q9UJH3 (UniProt , ExPASy)
Gene Symbol:	SFMBT1

Datasheet

Version: 2.0.0

Revision date: 02 Oct 2025



String: [9606.ENSF00000378235](#)

Molecular Weight: Calculated MW: 98.1 kDa

Buffer: PBS containing 0.09% sodium azide.

Note: THIS PRODUCT IS FOR RESEARCH USE ONLY. NOT FOR USE IN DIAGNOSTIC, THERAPEUTIC OR COSMETIC PROCEDURES. NOT FOR HUMAN OR ANIMAL CONSUMPTION.

For Reference Only