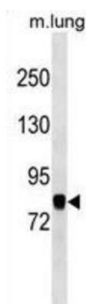


Component of Oligomeric Golgi Complex 7 (COG7) Antibody

Catalogue No.: abx030327



The protein encoded by this gene resides in the golgi, and constitutes one of the 8 subunits of the conserved oligomeric Golgi (COG) complex, which is required for normal golgi morphology and localization. Mutations in this gene are associated with the congenital disorder of glycosylation type IIe.

Target:	Component of Oligomeric Golgi Complex 7 (COG7)
Clonality:	Polyclonal
Reactivity:	Human, Mouse
Tested Applications:	ELISA, WB
Host:	Rabbit
Recommended dilutions:	WB: 1/1000. Optimal dilutions/concentrations should be determined by the end user.
Conjugation:	Unconjugated
Immunogen:	KLH-conjugated synthetic peptide between 725-753 amino acids from the C-terminal region of human COG7.
Isotype:	IgG
Form:	Liquid
Purification:	Purified through a protein A column, followed by peptide affinity purification.
Storage:	Aliquot and store at -20°C. Avoid repeated freeze/thaw cycles.
UniProt Primary AC:	P83436 (UniProt , ExPASy)
KEGG:	hsa:91949

Datasheet

Version: 2.0.0

Revision date: 29 Jun 2025



String: [9606.ENSF00000305442](#)

Molecular Weight: Calculated MW: 86.3 kDa

Buffer: PBS containing 0.09% sodium azide.

Note: THIS PRODUCT IS FOR RESEARCH USE ONLY. NOT FOR USE IN DIAGNOSTIC, THERAPEUTIC OR COSMETIC PROCEDURES. NOT FOR HUMAN OR ANIMAL CONSUMPTION.

For Reference Only