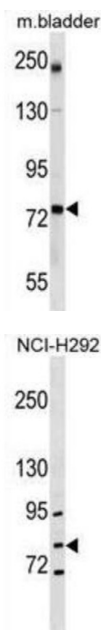


Gamma-Glutamylcysteine Synthetase (GCLC) Antibody

Catalogue No.: abx030331



Glutamate-cysteine ligase, also known as gamma-glutamylcysteine synthetase is the first rate-limiting enzyme of glutathione synthesis. The enzyme consists of two subunits, a heavy catalytic subunit and a light regulatory subunit. This locus encodes the catalytic subunit, while the regulatory subunit is derived from a different gene located on chromosome 1p22-p21. Mutations at this locus have been associated with hemolytic anemia due to deficiency of gamma-glutamylcysteine synthetase and susceptibility to myocardial infarction.

Target: Gamma-Glutamylcysteine Synthetase (GCLC)

Clonality: Polyclonal

Reactivity: Human, Mouse

Tested Applications: ELISA, WB

Host: Rabbit

Recommended dilutions: WB: 1/1000. Optimal dilutions/concentrations should be determined by the end user.

Conjugation: Unconjugated

Immunogen: KLH-conjugated synthetic peptide between 286-315 amino acids from the Central region of human GCLC.

Isotype: IgG

Datasheet

Version: 4.0.0

Revision date: 18 Aug 2025



Form:	Liquid
Purification:	Purified through a protein A column, followed by peptide affinity purification.
Storage:	Aliquot and store at -20°C. Avoid repeated freeze/thaw cycles.
UniProt Primary AC:	P48506 (UniProt , ExPASy)
KEGG:	hsa:2729
String:	9606.ENSP00000229416
Molecular Weight:	Calculated MW: 72.8 kDa
Buffer:	PBS containing 0.09% sodium azide.
Specificity:	Predicted to react with Rat GCLC.
Note:	THIS PRODUCT IS FOR RESEARCH USE ONLY. NOT FOR USE IN DIAGNOSTIC, THERAPEUTIC OR COSMETIC PROCEDURES. NOT FOR HUMAN OR ANIMAL CONSUMPTION.

For Reference Only