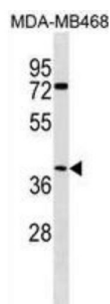


## Abhydrolase Domain Containing 1 (ABHD1) Antibody

Catalogue No.: abx030344



This gene is a member of the AB hydrolase superfamily and encodes a protein with an alpha/beta hydrolase fold. This domain is common to a number of hydrolytic enzymes of widely differing phylogenetic origins and catalytic functions.

**Target:** Abhydrolase Domain Containing 1 (ABHD1)

**Clonality:** Polyclonal

**Reactivity:** Human

**Tested Applications:** ELISA, WB

**Host:** Rabbit

**Recommended dilutions:** WB: 1/1000. Optimal dilutions/concentrations should be determined by the end user.

**Conjugation:** Unconjugated

**Immunogen:** KLH-conjugated synthetic peptide between 289-315 amino acids from the C-terminal region of human ABHD1.

**Isotype:** IgG

**Form:** Liquid

**Purification:** Purified through a protein A column, followed by peptide affinity purification.

**Storage:** Aliquot and store at -20°C. Avoid repeated freeze/thaw cycles.

**UniProt Primary AC:** Q96SE0 ([UniProt](#), [ExPASy](#))

**Gene Symbol:** ABHD1

# Datasheet

Version: 4.0.0

Revision date: 22 Jun 2025



**KEGG:** hsa:84696

**String:** [9606.ENSP00000326491](#)

**Molecular Weight:** Calculated MW: 45.2 kDa

**Buffer:** PBS containing 0.09% sodium azide.

**Note:** THIS PRODUCT IS FOR RESEARCH USE ONLY. NOT FOR USE IN DIAGNOSTIC, THERAPEUTIC OR COSMETIC PROCEDURES. NOT FOR HUMAN OR ANIMAL CONSUMPTION.

For Reference Only