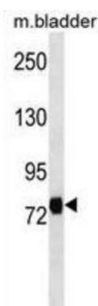


Leucine Rich Repeat Containing Protein 4C (LRRC4C) Antibody

Catalogue No.: abx030349



NGL1 is a specific binding partner for netrin G1 (NTNG1; MIM 608818), which is a member of the netrin family of axon guidance molecules (Lin et al., 2003 [PubMed 14595443]). [supplied by OMIM].

| | |
|-------------------------------|---|
| Target: | Leucine Rich Repeat Containing Protein 4C (LRRC4C) |
| Clonality: | Polyclonal |
| Reactivity: | Human, Mouse |
| Tested Applications: | ELISA, WB |
| Host: | Rabbit |
| Recommended dilutions: | WB: 1/1000. Optimal dilutions/concentrations should be determined by the end user. |
| Conjugation: | Unconjugated |
| Immunogen: | KLH-conjugated synthetic peptide between 316-343 amino acids from the Central region of human LRRC4C. |
| Isotype: | IgG |
| Form: | Liquid |
| Purification: | Purified through a protein A column, followed by peptide affinity purification. |
| Storage: | Aliquot and store at -20°C. Avoid repeated freeze/thaw cycles. |
| UniProt Primary AC: | Q9HCJ2 (UniProt , ExPASy) |
| Gene Symbol: | LRRC4C |

Datasheet

Version: 3.0.0

Revision date: 23 Jun 2025



String: [9606.ENSF00000278198](#)

Molecular Weight: Calculated MW: 72 kDa

Buffer: PBS containing 0.09% sodium azide.

Note: THIS PRODUCT IS FOR RESEARCH USE ONLY. NOT FOR USE IN DIAGNOSTIC, THERAPEUTIC OR COSMETIC PROCEDURES. NOT FOR HUMAN OR ANIMAL CONSUMPTION.

For Reference Only